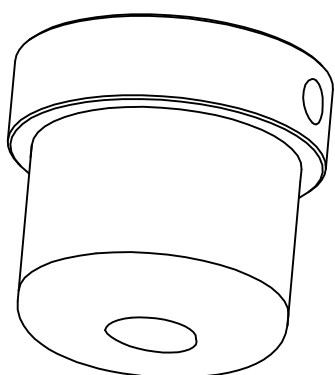
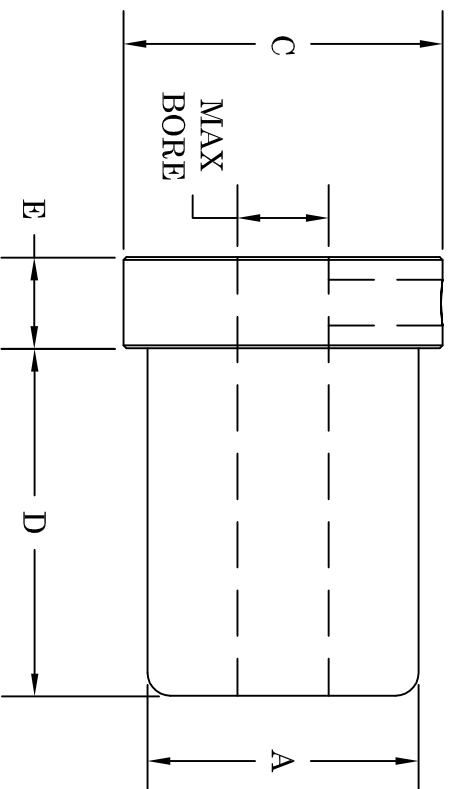


R13-3



R13A-3

CORE SIZE AND TYPE: 3" through 4" core I.D. for most fiber, steel tipped, and plastic cores.  
 MOUNTING METHOD: Through shaft with set screw and/or keyway if required.  
 BORE TOLERANCE: +.010"



CHUCK NUMBER	A	MAX. BORE SIZE	C	D	E
R13A-3	2.99	2.25	3.50	1.00	1.00
R13-3	3.99	2.25	3.50	3.00	1.00
R13-4	3.99	3.00	4.50	3.00	1.00

# TILT-LOCK

THE ROLL HANDLING PEOPLE FOR OVER 30 YEARS.

12070 43rd St NE  
 St Michael, MN 55376  
 Phone: 763-497-7045  
 Fax: 763-497-7046  
 1-800-999-8458  
<http://www.tiltlock.com>